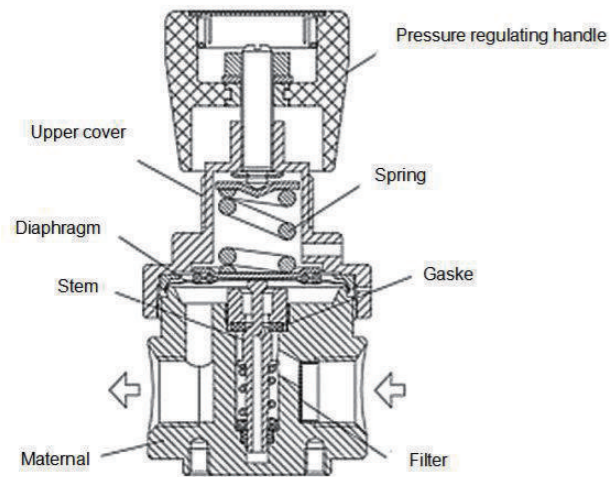


AKIRA-PROMAX R12 INLINE AND CYLINDER LIQUID & GAS DUAL APPLICATION REGULATOR

R12 Series stainless steel pressure reducers, single-stage diaphragm construction, stainless steel diaphragm pressure transmission, stable output pressure, applied to medium flow gas system



DESIGN FEATURES

- single-stage pressure-reducing structure
- Metal-to-metal diaphragm seal
- Body thread: 1/2" NPT(F) (1" Adapter OPT)
- Pressure gauge, safety valve interface 1/4" NPT(F)
- Filter element installed internally
- Panel mounting and wall mounting available

TYPICAL APPLICATIONS

- Laboratory
- Gas purge system
- Corrosive gas, special gas
- Gas bus-bar
- Testing equipment

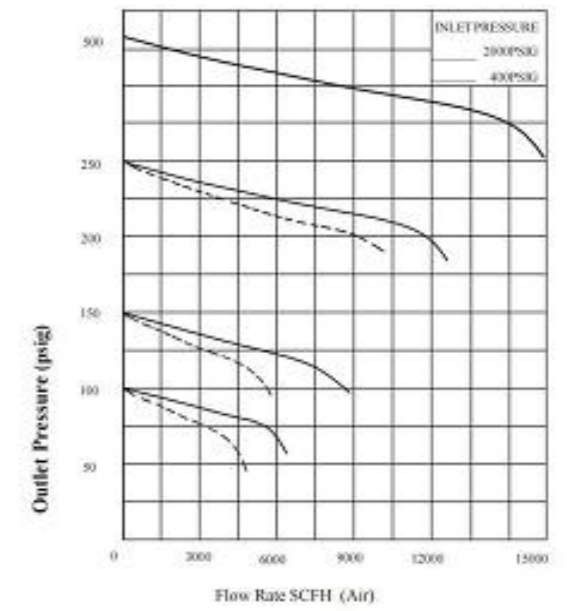
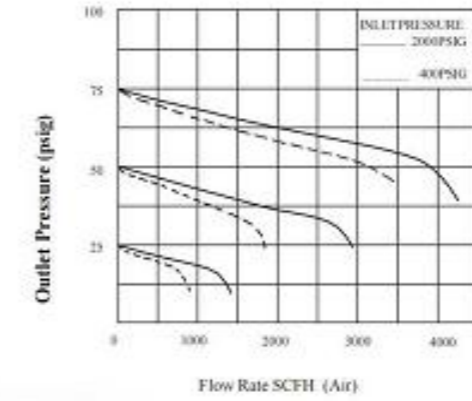
SPECIFICATION:

- Maximum inlet pressure: 5400 psig (372 Bar)
- Output pressure: 0~25, 0~50, 0~100, 0~125, 0~250 psig
- Safety testing pressure: 1.5 times of maximum inlet pressure
- Working Temp: -40°C ~ +74°C
- Internal leakage rate: 2×10^{-8} atm cc/sec He
- Cv: 1.1

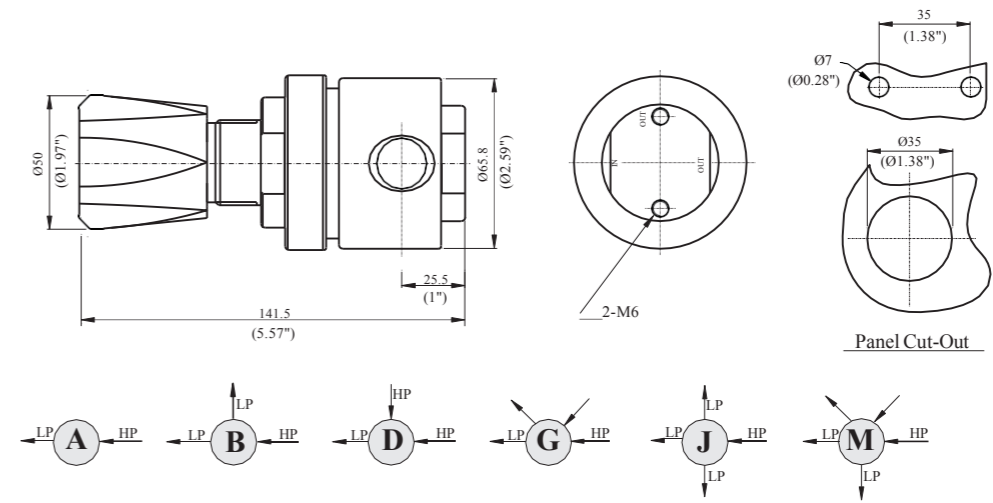
MATERIAL: Weight: 1.6kg

- Body: 316L, Brass
- Bonnet: 316L, Brass
- Diaphragm: 316L
- Strainer: 316L(10um)
- Seat: PCTFE, PTFE, Vespel
- Spring: 316L
- Valve stem: 316L
- Ready for Oxygen services

FLOW DATA



DIMENSIONS:



ORDERING INFORMATION

R12 Item	L Body Material	B Body Hole	D Inlet pressure	F Outlet pressure	G Pressure gauge	02 Inlet size	00 Outlet size	P mark
R12	L:316 B:Brass	A B D G J M	D:3000 psi F:500 psi	G:0-250 psig H:0-125psig I:0-100 psig K:0-50 psig L:0-25 psig	G:MPa gauge P:Psig/bar gauge W:No gauge	02: 3/8 " NPT (F) 03: 3/8 " NPT (M) 04: 1/2 " NPT (F) 05: 1/2 " NPT (M) 12: 3/8" OD 13: 1/2" OD Other type is available	02:3/8" NPT(F) 03:3/8"NPT(M) 04:1/2" NPT(F) 05:1/2" NPT(M) 12:3/8" OD 13:1/2" OD Other type is available	P:Panel mounting. R:With relief valve.